

Programming daily and weekly

Remote controller

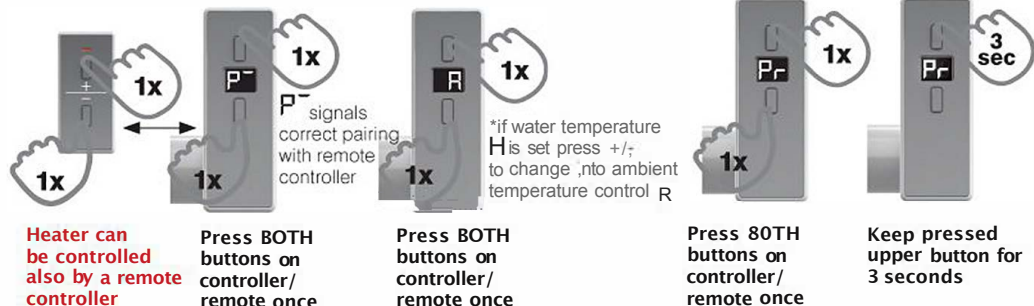
Turning the weekly program on
Enter the menu

Water/ambient temperature choice

A - ambient temperature sei
- required to turn the program on

Weekly program

Week cycle settings
(time and temperatures)

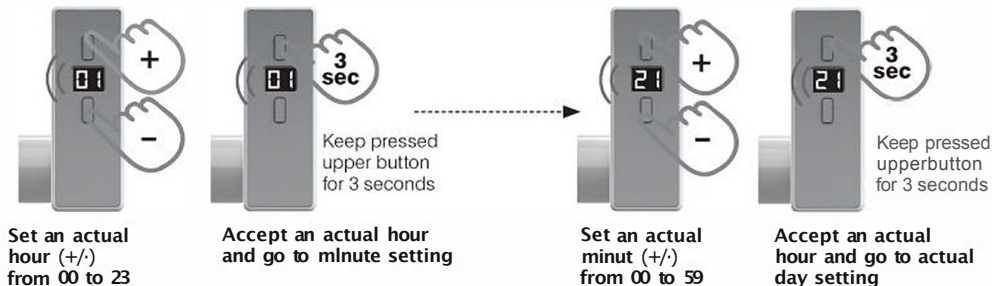


1 Hour setting

The display flashes

Minute setting

The display flashes

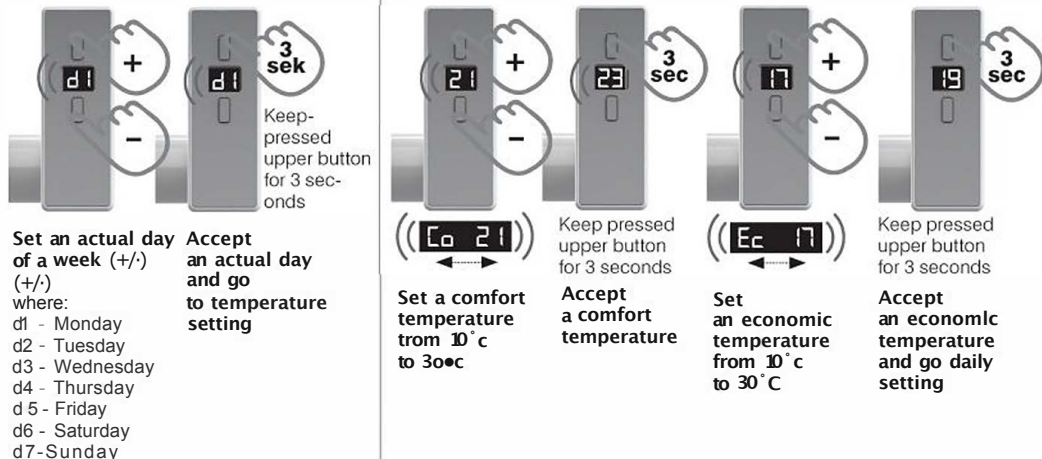


2 Day setting

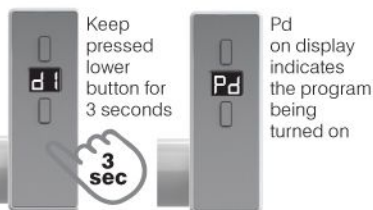
The display flashes

Comfort (Co) and Economic (Ec) temperature setting

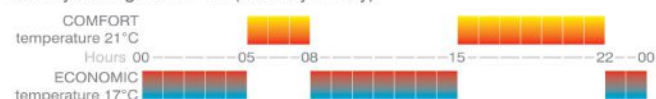
The display flashes



Factory settings. If you accept the factory settings turn the program on



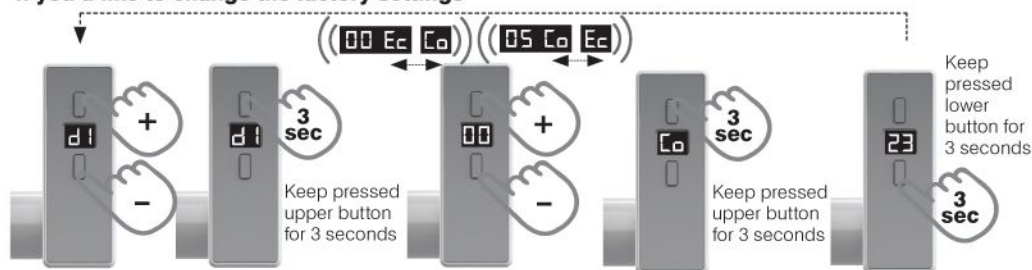
Factory settings for d1-d5 (Monday-Friday)



Factory settings for d6-d7 (Saturday-Sunday)



If you'd like to change the factory settings



Choose a day of a week (+/-) where:

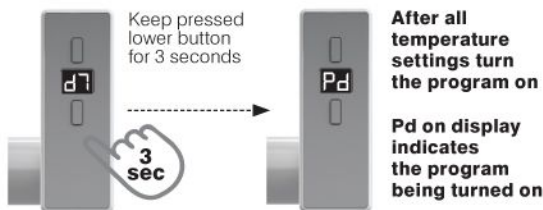
- d1 – Monday
- d2 – Tuesday
- d3 – Wednesday
- d4 – Thursday
- d5 – Friday
- d6 – Saturday
- d7 – Sunday

Go to temperature settings for a day selected

Set a temperature (comfort or economic) for every hour (from 00 till 23).

Change the actual setting between Co and Ec for selected hour.

Go back to a day choice

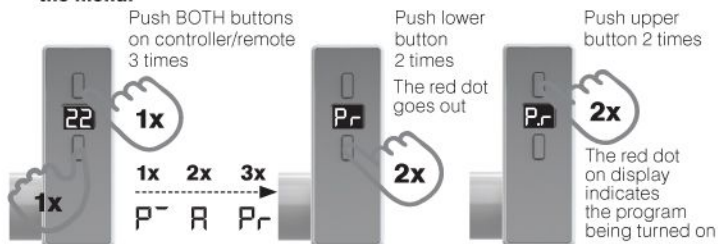


5 Turn on and off the program

To turn on or off the program enter the menu.

Turn OFF the program

Turn ON the program



* During first use the system enforces setting the time and day of the week
 ** Disturbances in the 230V mains power supply can cause the program to be turned off

6 Work status

6.1. Status display

Press + or - to show the actual settings: Actual temperature mode (Co or Ec), temperature, hour, minute

6.2. Boost mode turning on

Keep pressed upper for 3 seconds to turn the boost mode on (compare page X)

6.3. Turning off the heater

Keep pressed lower button for minimum 5 seconds to turn the heater off. After turning on heater the program continues to work.

6.4. „Open window” mode.

When ambient temperature falls for minimum 2C in short period of time then the program stops working for 30 minutes. During this time you can turn on/off a boost mode or you can turn off the heater. After 30 minutes the program continues to work.

Open window mode is signaled by blinking:

